

## Compatible Racking Makes/Models for Mounting Enphase Microinverters

---

### Purpose

This document is not intended to be an exclusive list of racking manufacturers. It lists products that have been verified either through field installations or the evaluation of actual racking samples in the Enphase mechanical lab. Section 1 lists products that work without modification, using the racking manufacturer’s standard hardware. Section 2 includes products that are known to work after modification or by adding a custom adapter. Section 3 lists manufacturers that are shipping the Enphase Microinverter as part of a factory assembled proprietary racking/module solution.

### Grounding Options

The ground clamp provided on the mounting flange of the Enphase Microinverter accepts #10 through #6 AWG grounding electrode conductors. As an alternative to installing a continuous grounding electrode conductor connected to each Microinverter chassis, a grounding washer may be used to ground the Microinverter to grounded racking. CSA recently completed the evaluation and approval of the Wiley Electronics “WEEB” grounding washers for use with the Enphase Microinverter. Where the compatible racking models have listed grounding washers available, the Wiley Electronics part numbers have been included in the tables below.

### Section 1 - No Modification Required

#### AEE

Module Rail	Fastener Information	Grounding Washer
SnapNRack	Slide nut with 5/16 hex head bolt	WEEB-PMC

#### Conergy

Module Rail	Fastener Information	Grounding Washer
Suntop	Quickstone slide nut with M8 socket head cap screw	WEEB-CMC

#### Direct Power and Water

Module Rail	Fastener Information	Grounding Washer
Power Rail	¼” hex head bolt, washer, nut, for top rail mount	WEEB-DMC

### IronRidge

Module Rail	Fastener Information	Grounding Washer
Light Rail XRL	1/4" hex head bolt, washer, nut, for top rail mount	WEEB-DMC
Standard Rail XRS	1/4" hex head bolt, washer, nut, for top rail mount	WEEB-DMC

### Krannich Solar

Module Rail	Fastener Information	Grounding Washer
K2 Systems	Slide nut with M8 socket head cap screw	WEEB-KMC

### mounts4solar

Module Rail	Fastener Information	Grounding Washer
Rail 6.0	M8 SS Hammer Head Bolt	

### NCP Solar

Module Rail	Fastener Information	Grounding Washer
	Slide nut with 5/16" socket head cap screw	WEEB-11.5

### ProSolar

Module Rail	Fastener Information	Grounding Washer
Rooftrac	Slide nut with 5/16" hex head bolt	WEEB-PMC

### Schuco

Module Rail	Fastener Information	Grounding Washer
SolarEZ	ezUniversal Screws (M8x14) ezAnchor Blocks	WEEB-SMC

### Sollega

Module Rail	Fastener Information	Grounding Washer
InstaRack	Top Spring Nut with 5/16" hex head bolt	WEEB-DMC

### Unistrut

Module Rail	Fastener Information	Grounding Washer
1-5/8", 1-1/4", 13/16", metal framing system	Channel nut with either 1/4" or 5/16" hex head bolt	

### Unirac

Module Rail	Fastener Information	Grounding Washer
Solarmount Light	1/4" hex head bolt, washer, nut, for top rail mount	WEEB-DMC
Solarmount Standard	1/4" hex head bolt, washer, nut, for top rail mount	WEEB-DMC
Solarmount HD	1/4" hex head bolt, washer, nut, for top rail mount	WEEB-DMC
Clicksys	Enphase mounting kit – 008010M-0024	

## Section 2 – Modification or Custom Adapter Required

### Unirac Sunframe

The Unirac Sunframe racking system secures the PV modules with a cap strip along the entire top edge of the racking instead of a typical bolt and clamp bracket arrangement. The Enphase Microinverters can be attached to the racking flange that supports the underside of the PV module by adding mounting holes and a flat adapter plate for the microinverter to attach to.

### Sunlink

When ordering a Sunlink Tilt Access™ system, specify that it is for an Enphase Microinverter installation. Sunlink will add microinverter mounting holes to the "Spar" extrusion. The mounting holes would be located at per module spacing for the M190, M210 microinverters, or at every other module spacing for the D380.

## **Section 3 – Factory Installed Assemblies**

### **Akeena Andalay**

The Akeena Andalay system makes use of a proprietary PV module frame that allows the PV modules to be assembled to each other without the use of standard module racking. The Enphase Microinverter is factory mounted directly to the underside of the PV module frame and shipped as a one PV module, one Microinverter assembly.

### **Ready Solar**

The Ready Solar “Solar in a Box” system makes use of a proprietary PV module frame weldment that supports 3 PV modules per frame. The Enphase Microinverters are factory installed to a rail behind the modules and shipped as part of a complete 3 PV module, frame, Microinverter assembly.

### **Solar Red**

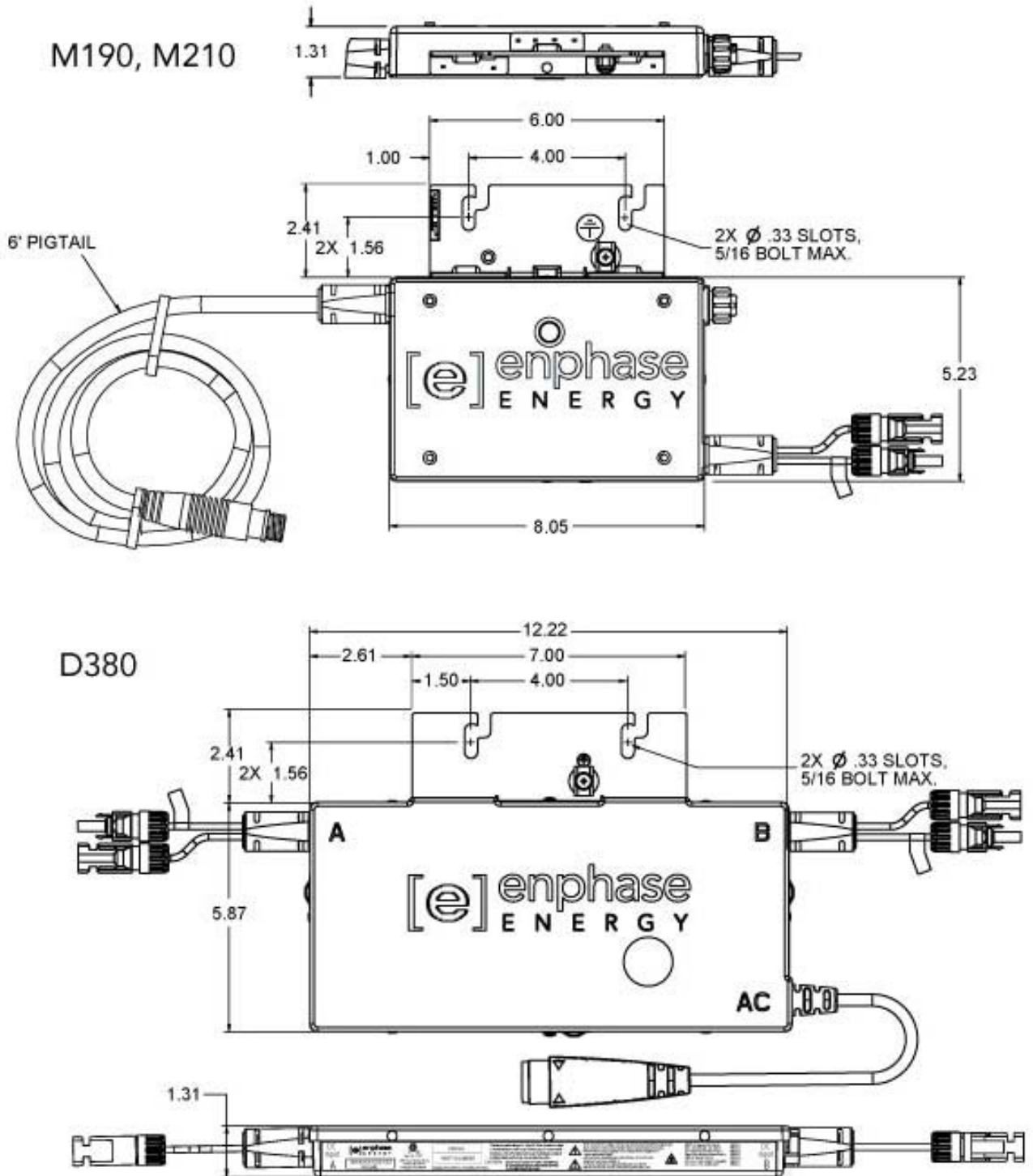
The Solar Red PV module mounting system makes use of proprietary brackets that are factory mounted to standard PV module frames and mate to a proprietary roof bracket. The Enphase Microinverter is factory mounted to the “Panel Lower Mount” and ships as part of a PV module, panel lower mount, panel locking mechanism assembly.

### **Zep Solar**

The Zep Solar system makes use of a proprietary PV module frame that allows the PV modules to be assembled to each other without the use of standard module racking. The Enphase Microinverter is factory mounted directly to the underside of the PV module frame and shipped as a one PV module, one Microinverter assembly.

### M190, M210, D380 Dimensions

If a specific racking model is not listed in this document, the drawing below can be used to verify compatibility.



We continue to evaluate racking models for compatibility. Please check the Enphase Energy website for product updates and announcements or contact Customer Service regarding a specific racking compatibility:

Enphase Energy website: <http://www.enphaseenergy.com>

Enphase Customer Service:  
<http://www.enphaseenergy.com/support/technicalsupport.cfm>

Enphase Energy Inc.  
201 1<sup>st</sup> Street, Suite 300  
Petaluma, CA 94952  
Phone: 707-763-4784  
TOLL FREE: 877-797-4743  
Fax: 707-763-0784  
[www.enphaseenergy.com](http://www.enphaseenergy.com)  
[info@enphaseenergy.com](mailto:info@enphaseenergy.com)